

CAPTIVE ORCA FAMILY TREE

SEAWORLD PARKS & ENTERTAINMENT, U.S.A

ORKY II'S LINEAGE

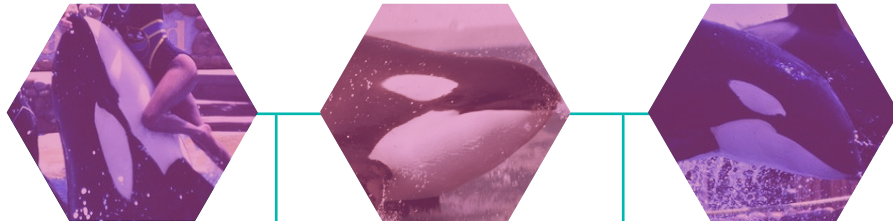
HEALTHY LINEAGE 

UNCONFIRMED PATERNITY 

INBREEDING 

SUSPECTED INBREEDING 

WILD CAUGHT



1ST GENERATION



PHOTOGRAPHY CREDIT

Anonymous, [Nick DeWolf Photography](#),
[MyOrcaRomance](#)

INFORMATION SOURCE

[National Marine Fisheries Service](#),
US Marine Mammal Inventory Reports



CAPTIVE ORCA FAMILY TREE

SEAWORLD PARKS & ENTERTAINMENT, U.S.A

KANDUKE'S LINEAGE

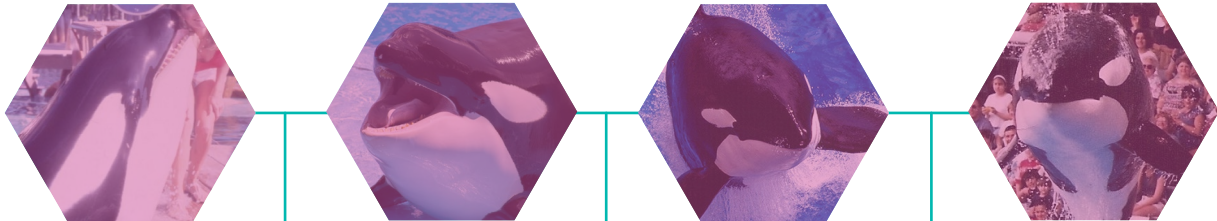
HEALTHY LINEAGE ———

UNCONFIRMED PATERNITY - - -

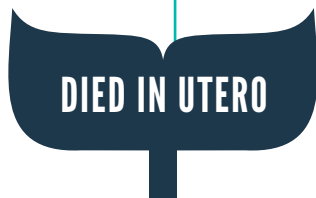
INBREEDING ———

SUSPECTED INBREEDING - - -

WILD CAUGHT



1ST GENERATION



PHOTOGRAPHY CREDIT

Shannon Cremeans, [Lee Harrison](#),
[Kim Mahan](#), SeaWorld Entertainment,
[State Archives of Florida](#)

INFORMATION SOURCE

[Cynthia Payne](#), Jeff Ventre,
[National Marine Fisheries Service](#),
 US Marine Mammal Inventory Reports

CAPTIVE ORCA FAMILY TREE

SEAWORLD PARKS & ENTERTAINMENT, U.S.A

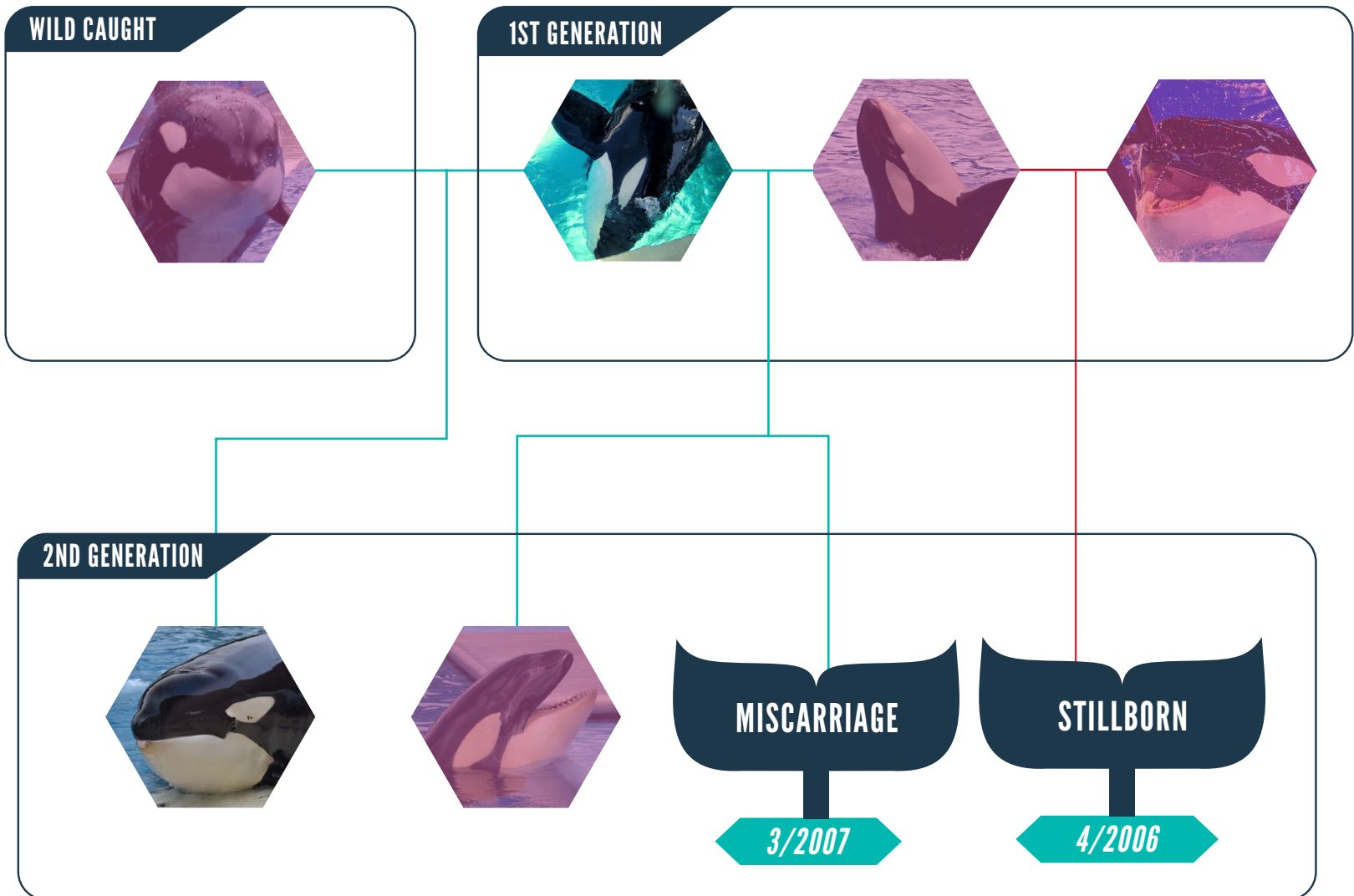
KEET'S LINEAGE

HEALTHY LINEAGE ———

UNCONFIRMED PATERNITY - - - -

INBREEDING ———

SUSPECTED INBREEDING - - - -



PHOTOGRAPHY CREDIT

Anonymous, [Josh Grenier](#), Kaarina Makowski, [Katie Mortus](#), [MyOrcaRomance](#), Ingrid N. Visser

INFORMATION SOURCE

[Rome News-Tribune](#), [SeaWorld Entertainment](#), SeaWorld park regulars, US Marine Mammal Inventory Reports

CAPTIVE ORCA FAMILY TREE

SEAWORLD PARKS & ENTERTAINMENT, U.S.A

ULISES'S LINEAGE

HEALTHY LINEAGE



UNCONFIRMED PATERNITY



INBREEDING



SUSPECTED INBREEDING



WILD CAUGHT



1ST GENERATION



2ND GENERATION



3RD GENERATION



PHOTOGRAPHY CREDIT

Kaarina Makowski, Marsvinet,
[Princess Koko](#)

INFORMATION SOURCE

[Nice Matin](#), SeaWorld Entertainment,
[TF1 Info](#), [The Washington Times](#)

CAPTIVE ORCA FAMILY TREE

SEAWORLD PARKS & ENTERTAINMENT, U.S.A

WINSTON'S LINEAGE

HEALTHY LINEAGE ———

INBREEDING ———

UNCONFIRMED PATERNITY - - - -

SUSPECTED INBREEDING - - - -

WILD CAUGHT



1ST GENERATION



PHOTOGRAPHY CREDIT

Anonymous, UPI

INFORMATION SOURCE

[John Hall](#), US Marine Mammal Inventory Reports,
National Marine Fisheries Service

CAPTIVE ORCA FAMILY TREE

SEAWORLD PARKS & ENTERTAINMENT, U.S.A

KYUQUOT'S LINEAGE

HEALTHY LINEAGE



UNCONFIRMED PATERNITY



INBREEDING



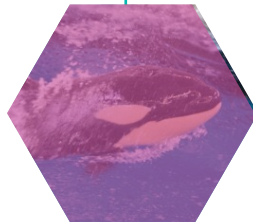
SUSPECTED INBREEDING



1ST GENERATION



2ND GENERATION



PHOTOGRAPHY CREDIT

[Lee Harrison, Mainline Mom,](#)
SeaWorld Entertainment

INFORMATION SOURCE

[SeaWorld Entertainment,](#)
US Marine Mammal Inventory Reports

CAPTIVE ORCA FAMILY TREE

SEAWORLD PARKS & ENTERTAINMENT, U.S.A

KOTAR'S LINEAGE

HEALTHY LINEAGE ———

UNKNOWN PATERNITY - - -

INBREEDING ———

SUSPECTED INBREEDING - - -

WILD CAUGHT



1ST GENERATION



2ND GENERATION



PHOTOGRAPHY CREDIT

Anonymous, [Clint](#), [Lee Harrison](#),
[MacGuffin_65](#), [MyOrcaRomance](#),
[State Archives of Florida](#), [Tiger Jack](#),
 SeaWorld, Ingrid N. Visser

INFORMATION SOURCE

[Fort Worth Star-Telegram](#), [Loro Parque](#),
 National Marine Fisheries Service,
 SeaWorld Entertainment,
[The Spokesman Review](#), [The Victoria Advocate](#)

