

OTHER TOOLS & SUPPLIES

- fibre stuffing or fabric scraps
- paper printer or tracing paper
- contrasting embroidery floss & an embroidery hoop, for eyes – 182cm of ribbon, for hanging (optional) - basic sewing supplies:
- sewing machine
- needle & coordinating thread
- iron & pressing surface
- scissors & fabric shears
- straight pins
- fabric marker

NOTES

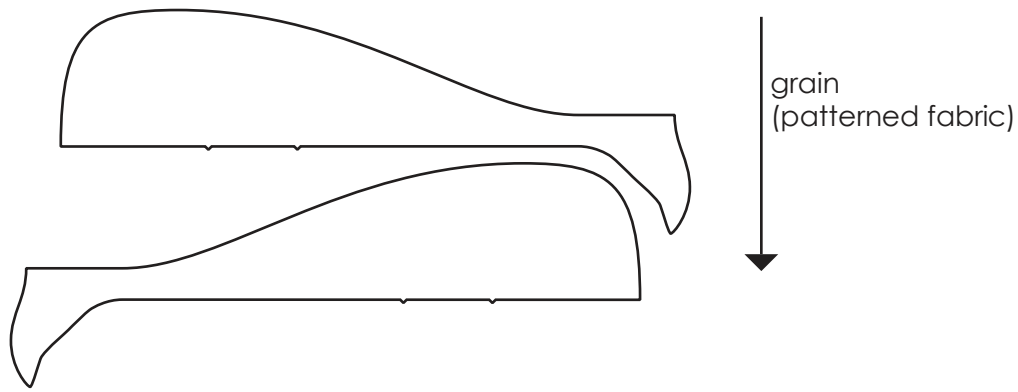
1. Please wash, dry & iron your fabric before beginning.
2. Use a 1cm seam allowance throughout.
3. All seams are sewn Right Sides together.

CUTTING

1. Copy the Walter the Whale template at 100% scale and cut out the pages at their marked borders. Join the pages according to their numbered triangles and cut out the template pieces.
2. Trace or pin the template to your fabric as indicated on the pattern pieces, and cut out the pieces in fabric. Take care to include the notches! You will have:
 - (2) Back pieces, mirror images of each other
 - (2) Back fins, mirror images of each other
 - (1) Belly, cut on the fold line
 - (2) Belly fins, mirror images of each other

Note: For a directional print, trace the Back piece (2x) onto a single layer of fabric as shown, so that in both pieces the fabric's pattern runs from the top of Walter's back toward his belly. For non-directional cottons, cut your pieces from folded double layers of fabric.



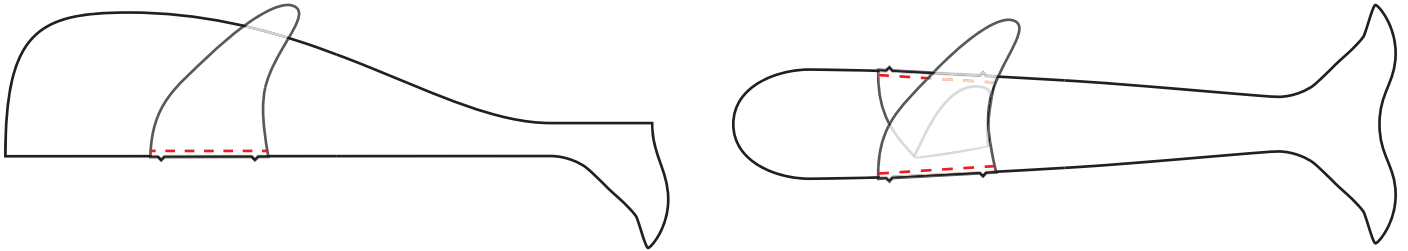


EYES

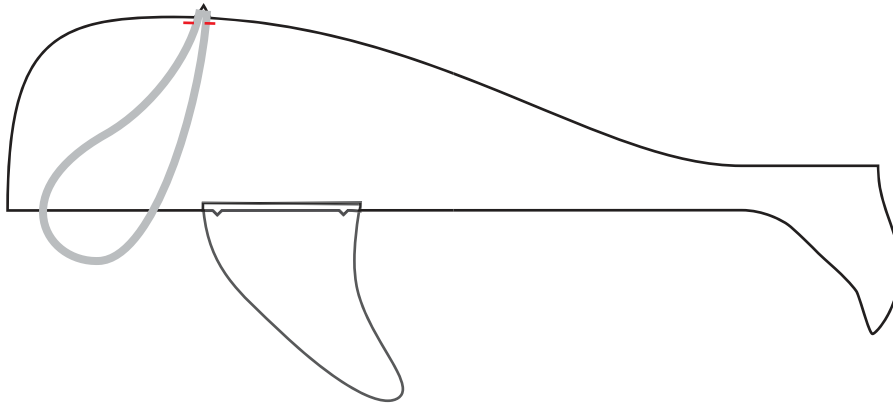
1. Transfer the Eye marks from the Back template to the Back fabric pieces. If you're having trouble seeing the Eye through your fabric, use straight pins to mark either end and the centre of the Eye curve, then trace between the pin points.
2. Embroider a sleepy Eye on each Back piece.

ASSEMBLY

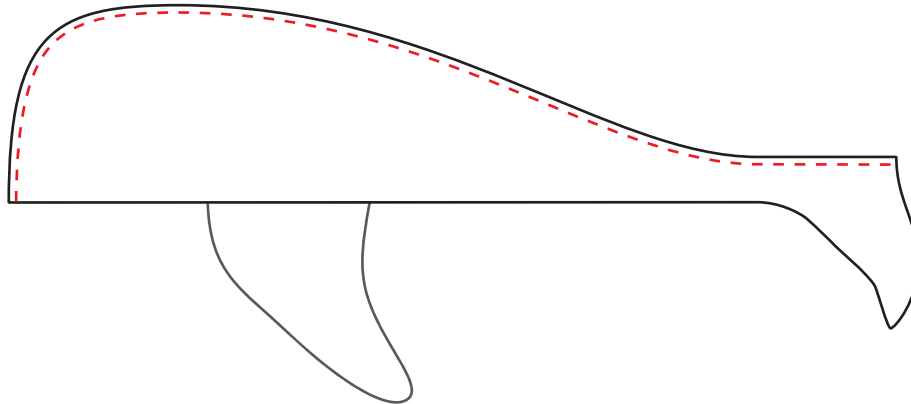
1. Sew the Fins to their matching body pieces as shown, with the notches aligned (the fins should point toward the tail ends of the body pieces). Press these seams toward the fins.



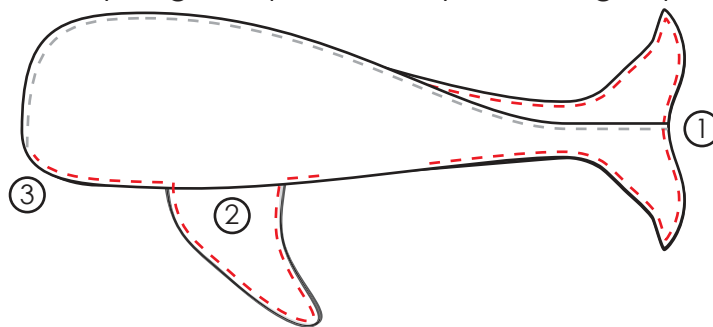
2. Baste the ends of your ribbon to the Wrong Side of one Back piece as shown, at the notch in its top edge. The raw ends of the ribbon should point toward the fabric's edge, and the long loop should point away from the edge.



3. Sew the Back pieces together as shown, from the centre of the tail to the tip of the nose. Clip into your curves & press the seam open. Turn Walter Right Side out, press the seam again and turn him Wrong Side out once more.



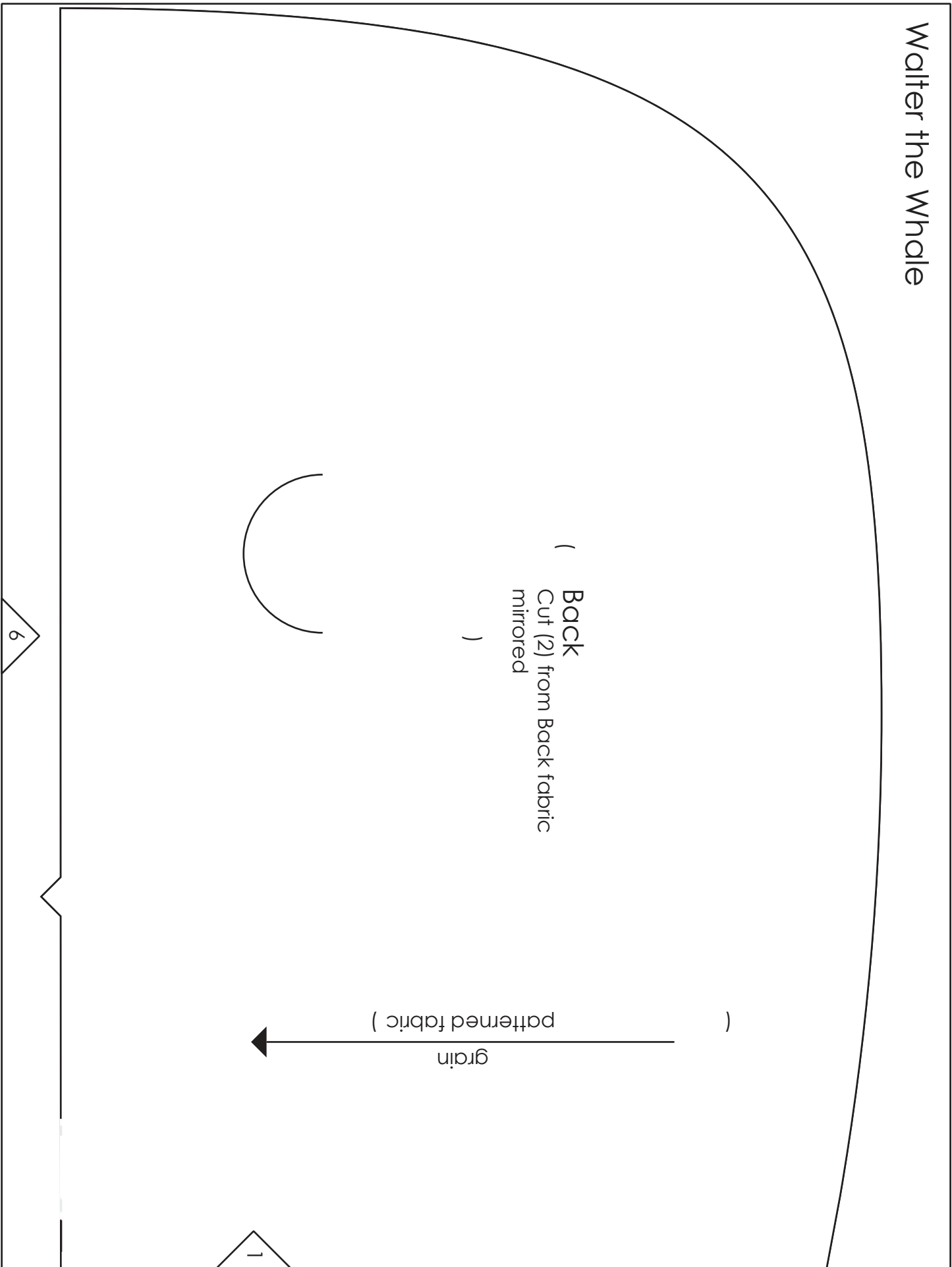
4. Pin & sew the Belly & its Fins to the Back & its Fins. Begin by pinning the tails together, then the Fins where they join the bodies, then around the remaining body, fin & nose edges. Leave a 10cm gap behind one Fin, for turning. Backstitch at the beginning & end of this seam. Note: When sewing around the nose, have the Back pieces facing upward and be sure to keep them smooth as you go, to prevent any bunching or puckering.



5. Clip into the corners where the Fins join the body, and around your curves. Press the seam open & turn the whale Right Side out through the gap behind his Fin. A knitting needle or length of dowel makes it easier to invert the tips of his Fins & tail.
6. Stuff Walter firmly, making sure to stuff all the way into his tail & Fins, and whipstitch the gap closed.
7. To eliminate any bulging between the Fins, stitch in the ditch (by hand) between the top & bottom seams of each Fin, closing the gap between them. You'll want to use a doubled-up thread for this part.

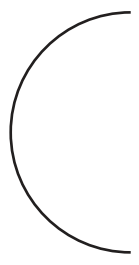


Walter the Whale



(**BACK**)
Cut (2) from Back fabric
mirrored

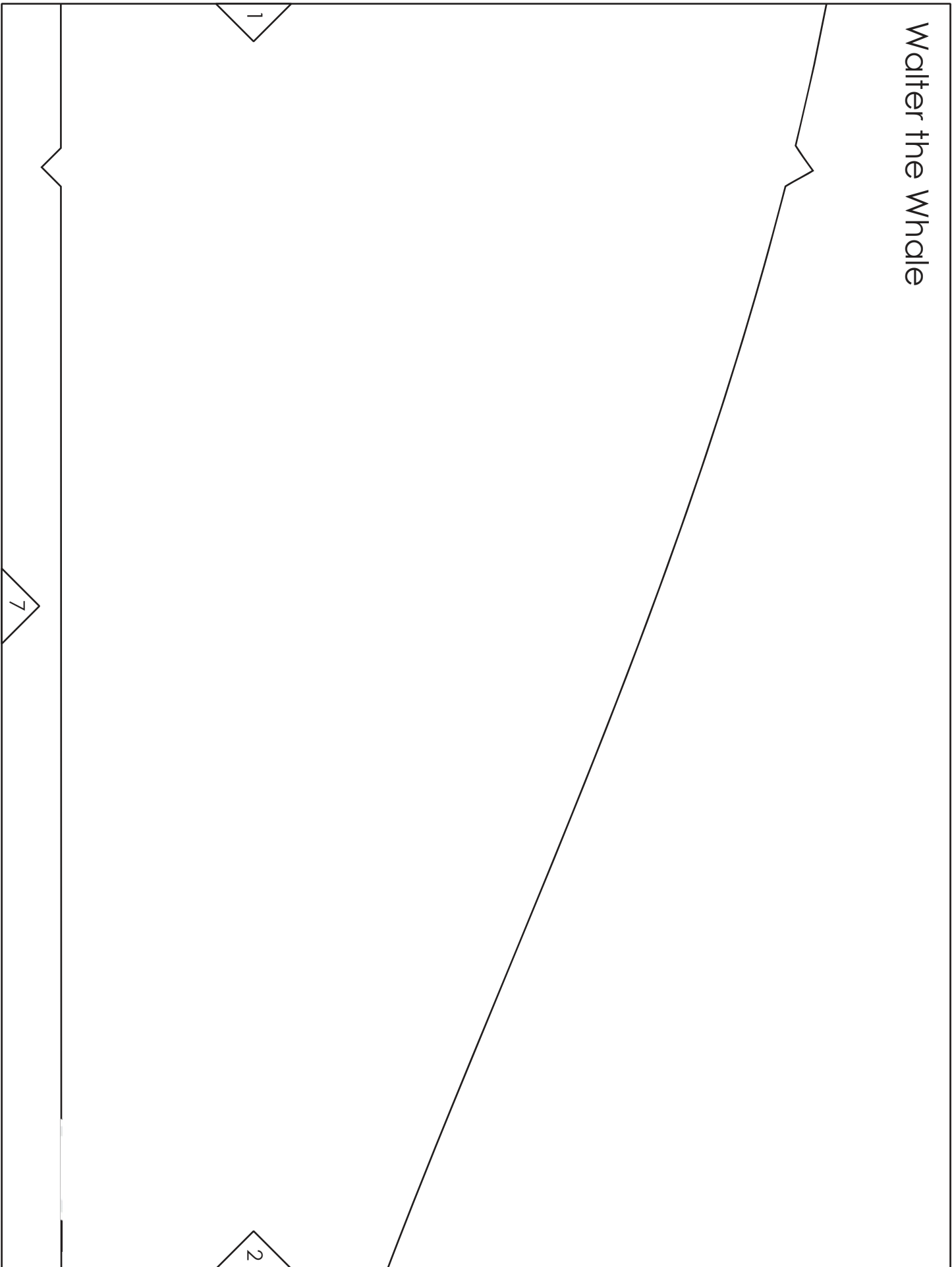
(
grain
← patterned fabric)



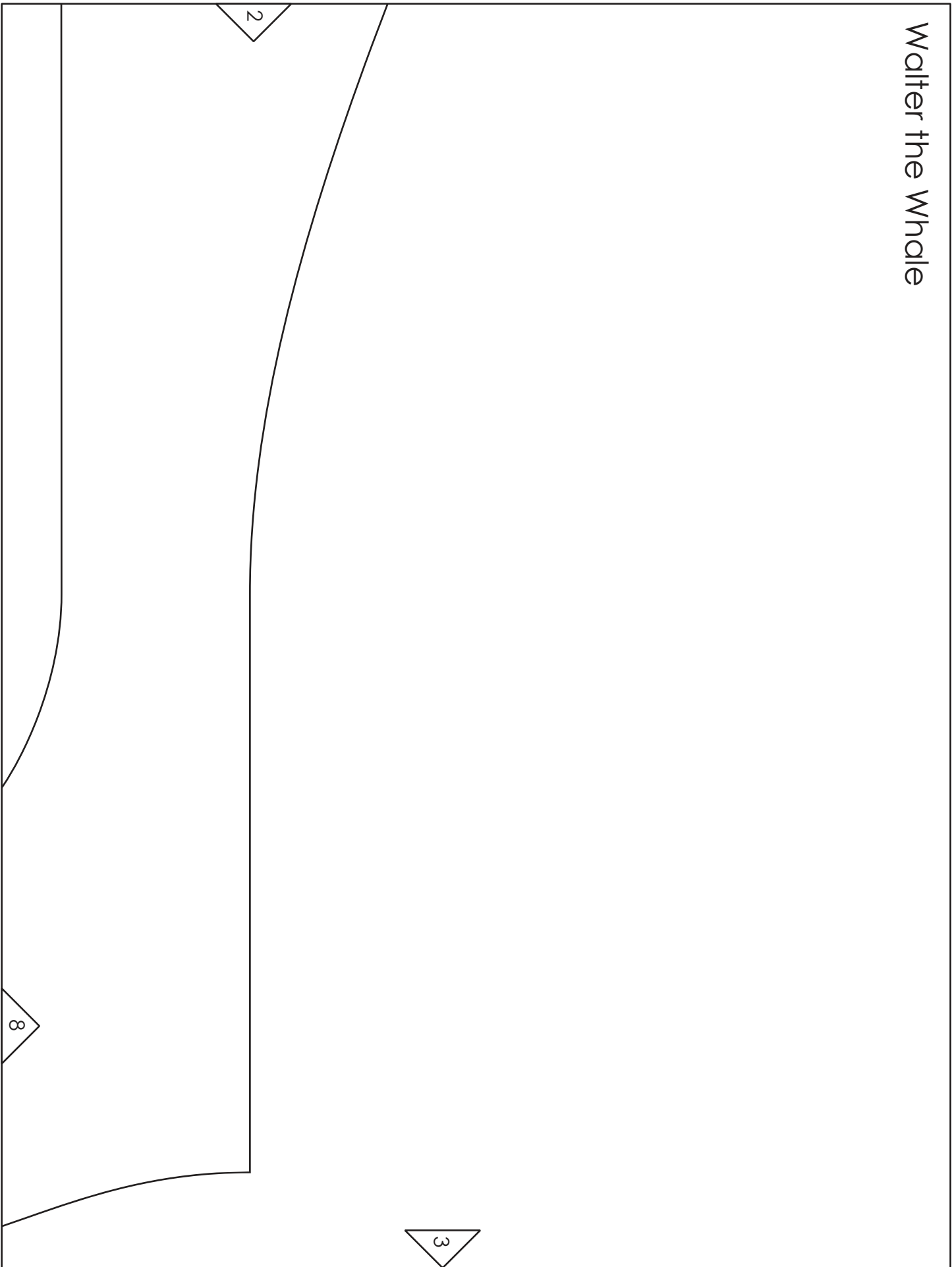
1

6

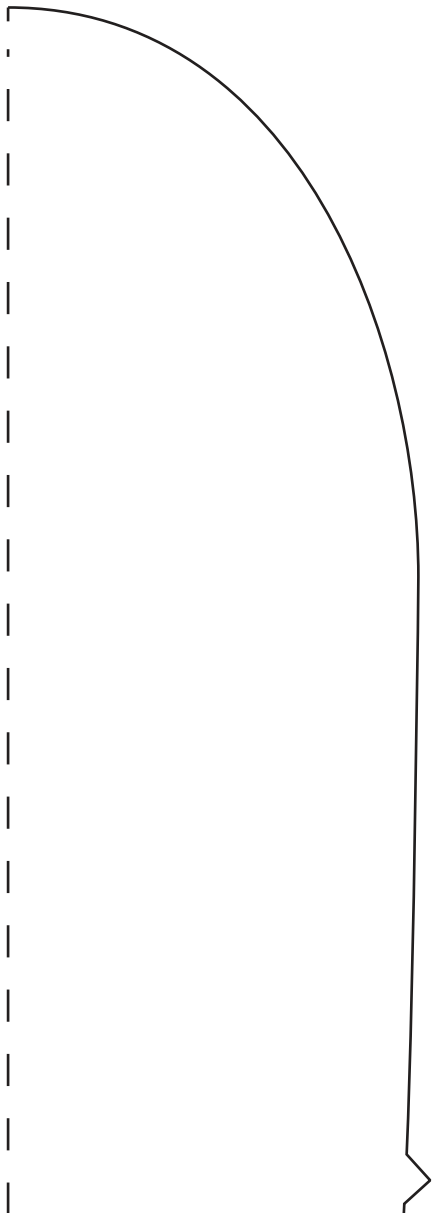
Walter the Whale



Walter the Whale



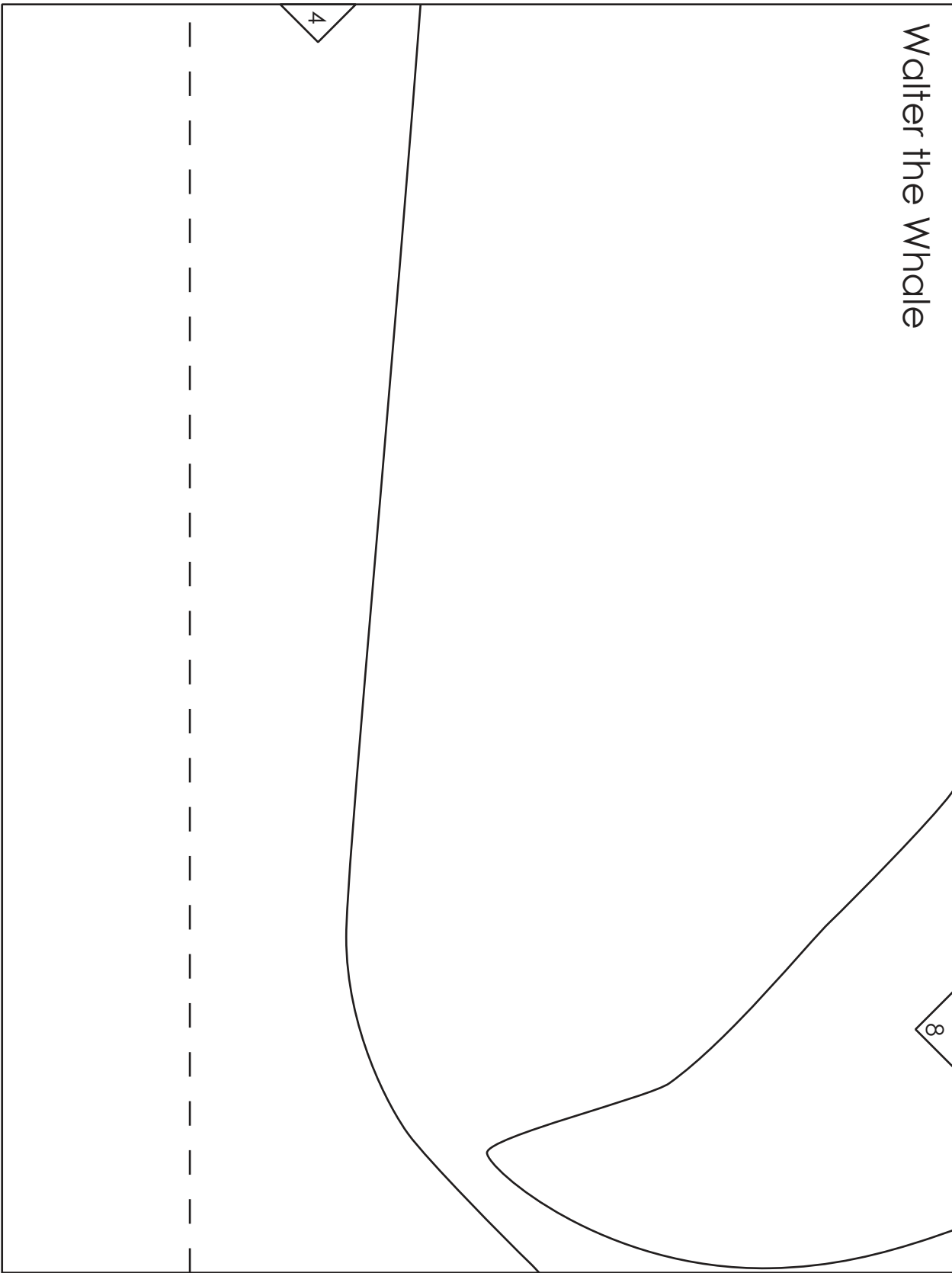
Walter the Whale



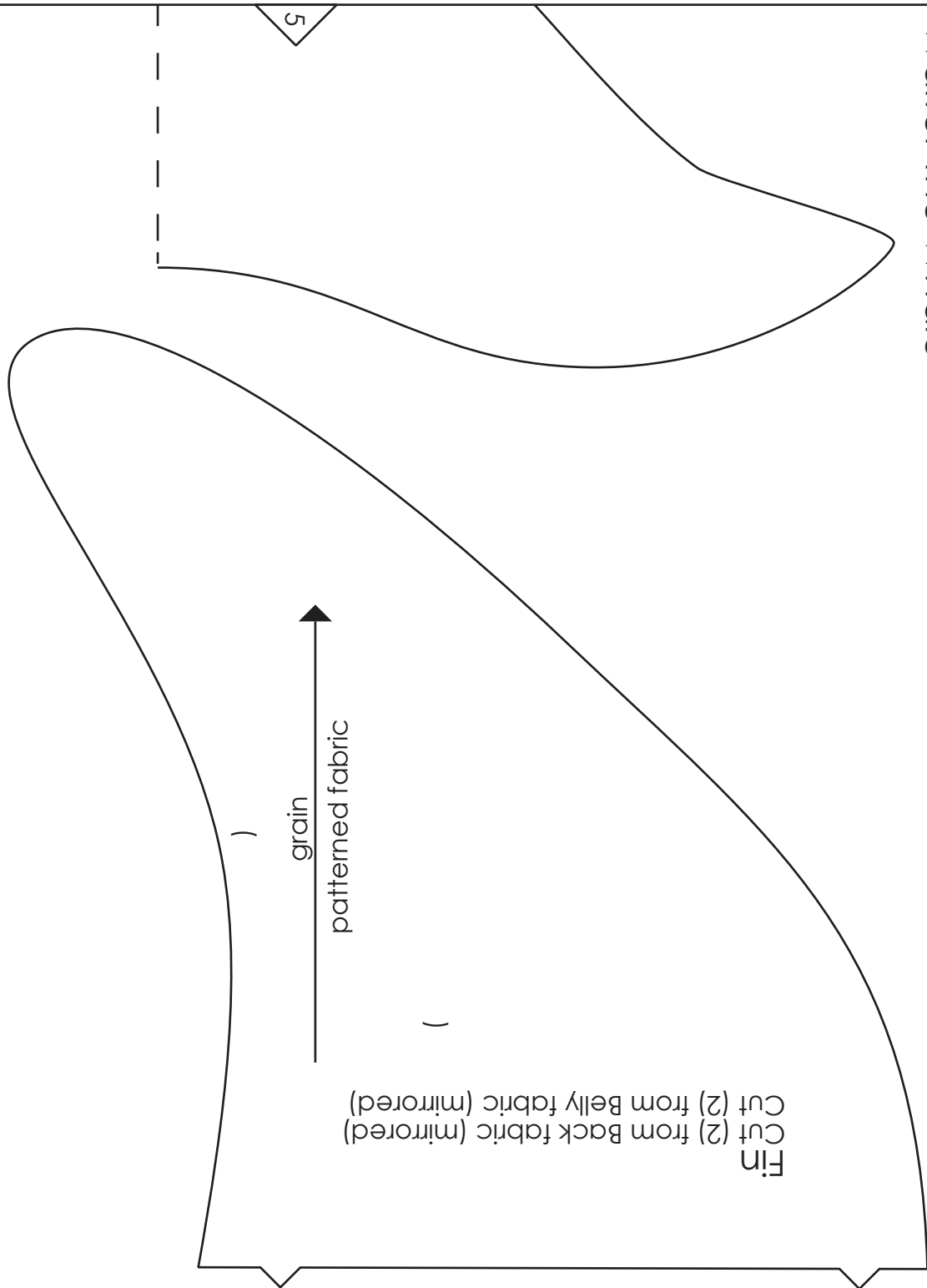
Walter the Whale

8

4



Walter the Whale



Walter the Whale



Belly
Cut (1) on folded double layer

(

grain
patterned fabric



fold

)

3